

# ULTRA系列舞台电动葫芦

## ULTRA STAGE ELECTRIC HOIST >>>

D8  
PLUS



型号/MODEL: ULTRA-1.0 D8 PLUS

起升速度/LIFTING SPEED: 4M/MIN

起升重量/SAFE WORKING LOAD: 1000KG

产品符合德国 BGV D8+ (IGVV SQP2)标准

THE PRODUCT COMPLIES WITH THE GERMAN BGV D8+ (IGVV SQP2) STANDARD

📍 地址: 北京市海淀区金隅嘉华D座1005室

☎ 电话: +86 15313969865

🌐 网址: [www.jdp.top](http://www.jdp.top)

🏭 Manufacturer: JDP China Drive Systems Co., Ltd

☎ TEL: +86 15313969865

🌐 Website: [www.jdp.top](http://www.jdp.top)

✉ Email: [admin@jdp.top](mailto:admin@jdp.top)

# 目录 CONTENTS

---

1.产品简介 .....	3
2.技术数据 .....	4
2.1.标准配置 .....	4
2.2.选装配置 .....	4
2.3.线形图 .....	5
2.3.产品爆炸图 .....	8
3.电器数据 .....	9

---

1.PRODUCT INTRODUCTION .....	3
2.TECHNICAL DATA .....	4
2.1.STANDARD VERSION .....	4
2.2.OPTIONAL CONFIGURATION .....	4
2.3.LINE GRAPH .....	5
2.3.PRODUCTS EXPLOSION VIEW .....	8
3.ELECTRICAL DATA .....	9

---





### 防护等级IP66

高强度铝合金外壳，压铸一体成型，耐腐蚀，不生锈，高密封性，可在雨中作业，安装方便，自重轻，散热好。

### IP66 grade protection

High strength shell made of die casting aluminum alloy. Corrosion and rust resistance, high sealing performance workable in the rain. easy installation, light weight, good heat dissipation.

### 减速箱多层斜齿传动

齿轮精度等级6级，运行静音安全，齿轮箱采用完全油谷润滑，密封后可实现终身免维护，具有温度调节功能，寿命长。

### Helical gear multi-drive transmission

Gears precision grade 6, low noise, safe operation, oil lubricated, maintenance free after sealing. Gear box has the function of temperature regulation for longer life.

### 离合器

完全采用进口湿式离合摩擦片，具有超载保护功能，以及防止冲顶，终身免维护设计。

### Clutch

Imported wet clutch friction pad. Overload protection, anti-collision. Maintenance free.

### 电磁刹车

断电后第一时间放开，刹车抱死，安全可靠，制动器完全封闭免维护设计，满足恶劣环境工作要求。

### Electromagnetic brake

Maintenance free electromagnetic brake for harsh environment. It will lock the brake immediately when power source is off.

### 高性能电机

体积小，启动转矩高，满足高频率持续工作，绝缘等级F级，可选配电机过热保护装置。

### High performance electric motor

Small size, high starting torque, meet high frequency continuous work, insulation grade F, Optional motor overheating protection device.

### G100级链条

8620D合金钢起重链条，符合欧洲EN818-7标准。

### G100 grade load chains

8620D alloy steel lifting chain, in line with European EN818-7 standard.

## 标准配置:

- 设备型号: ULTRA-1.0 D8 PLUS
- 起重量符合 BGV D8+ (IGVV SQP2): 1000Kg 双刹车
- 提升速度 (m/min): 4
- 高压控制: 380-415V、3ph、+PE、50/60Hz;  
220-230V、3ph、+PE、50/60Hz (见图5,P8)
- 1m电缆, 带CEE-16 / 4
- 链条尺寸 EN818-7 (mm): 9\*27
- 链条重量 (kg/m): 1.8
- 链条等级: G100
- 链条表面: 镀锌 (蓝白)
- 导链器: 带有4个链窝链轮的精密导链器
- 链条行数: 1
- 链条袋: 1纺织链条袋, 可拆卸, ≤30米
- 离合器: 获得专利的摩擦离合器, 用于过载保护
- 满载噪音 (dB): ≤60
- 制动器: 2个直流制动
- 吊钩: 1个下 (可旋转)
- 悬挂方式: 吊环悬挂
- 安装方式: 自爬或固定 (正挂或倒挂)
- 塑料手柄: 无
- 防护等级: IP66
- 不含链条的重量 (kg): 53
- 电机功率 (KW): 2.2
- 电流消耗 (A): 5
- 机械等级/FEM9.511: 1Bm/25% ED
- 颜色: 黑色, 色号RAL 9005 哑光

## 选装配置:

- **电子限位 选装** 内部调节机械旋转电子限位
- **电子限位 选装** 直接调节上下电子触点限位 (见图6,P8)

## STANDARD VERSION:

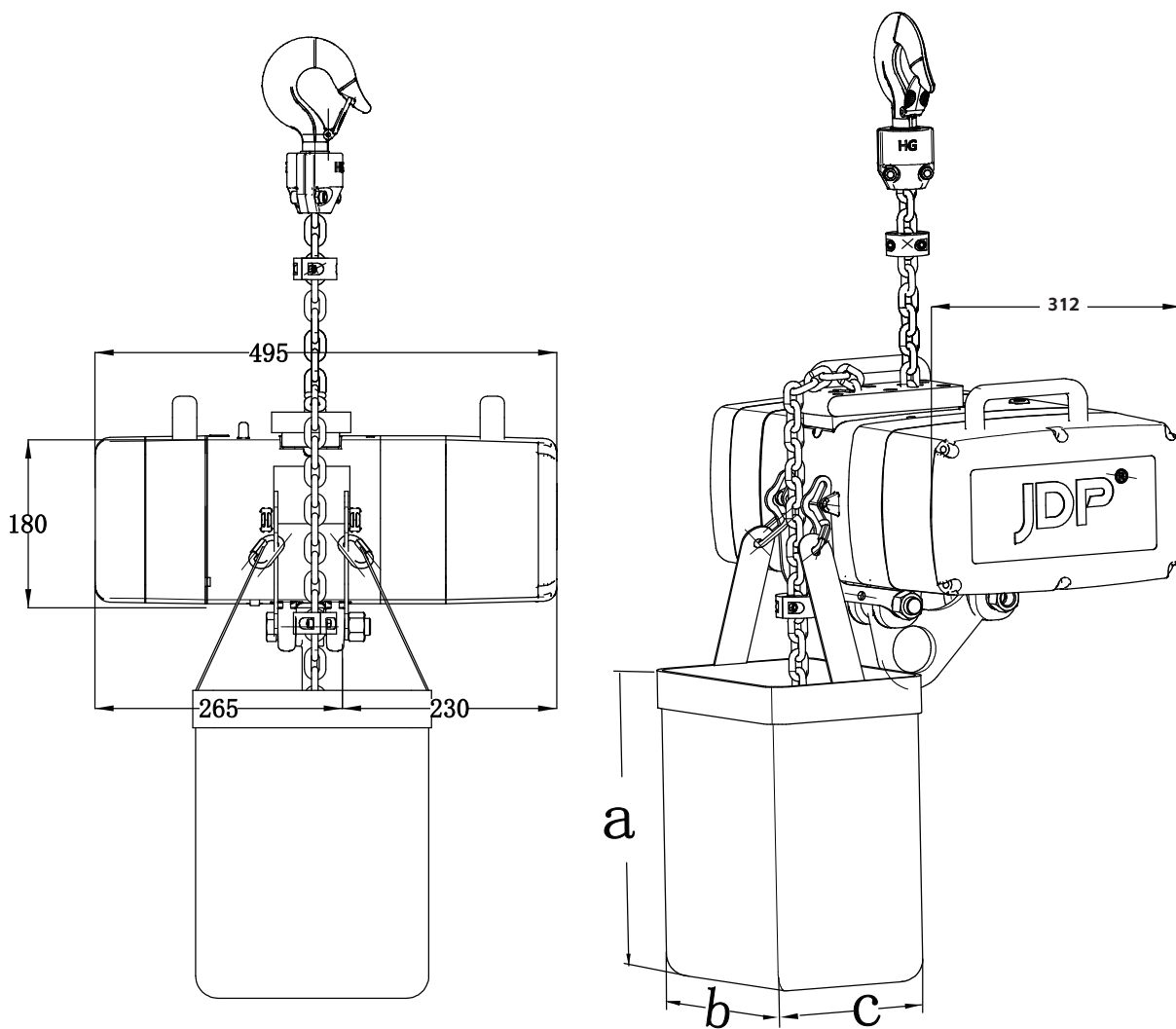
- Model : ULTRA-1.0 D8 PLUS
- SWL acc. BGV D8+ (IGVV SQP2) : 1000Kg Double brake
- Lifting speed (m/min) : 4
- High voltage directly control :  
380-415V、3ph、+PE、50/60Hz;  
220-230V、3ph、+PE、50/60Hz (See Figure5,P8)
- 1m Cable with CEE-16/4
- Chain acc. EN818-7 (mm) : 9\*27
- Chain net weight (kg/m) : 1.8
- Grade of chain : 100
- Chain surface : Galvanized (white)
- Chain Guide : Precise chain guide with 4-pocket chain wheel
- Chain falls : 1
- Chain bag : 1 textile chain bag, detachable, ≤30 meters
- Clutch : Patented friction clutch for overload protection
- Full load noise level (db) : ≤60
- Brake: 2 DC brakes
- Load hook: 1-fall / turnable
- Suspension: Suspension ring
- Mounting position: Climbing & stationary  
(upside hung&upside down)
- Plastic handles: without
- Protection level: IP66
- Weight without chain (kg): 53
- Motor power (KW) : ca.2.2
- Current consumption (A): ca.5
- Mechanism class /FEM9.511: 1Bm/ 25% ED
- Color:black, RAL 9005 matt

## OPTIONAL:

- **Electronic limit switch, optional**, internal adjust mechanical rotation electronic limit
- **Electronic limit switch, optional**, directly adjust the up and down electronic contact limit switch (See Figure 6,P8)

# 电动葫芦尺寸表/ELECTRIC CHAIN HOIST SIZE

图1/Figure 1



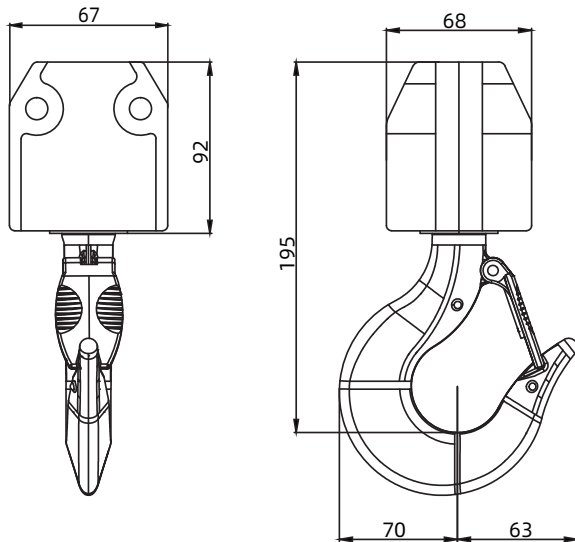
链条袋规格/CHAIN BAG SPECIFICATION			
链条长度 CHAIN LENGTH(m)	链条袋尺寸/CHAIN BAG SIZE(mm)		
	a	b	c
10	400	210	210
20	600	210	210
30	800	210	210

注：单位mm/Note:Unit mm

# 吊挂组件/OPTIONAL HOOK SUSPENSION ASSEMBLY

360°旋转吊钩悬挂组件  
360° rotating hook suspension assembly

图2/Figure 2

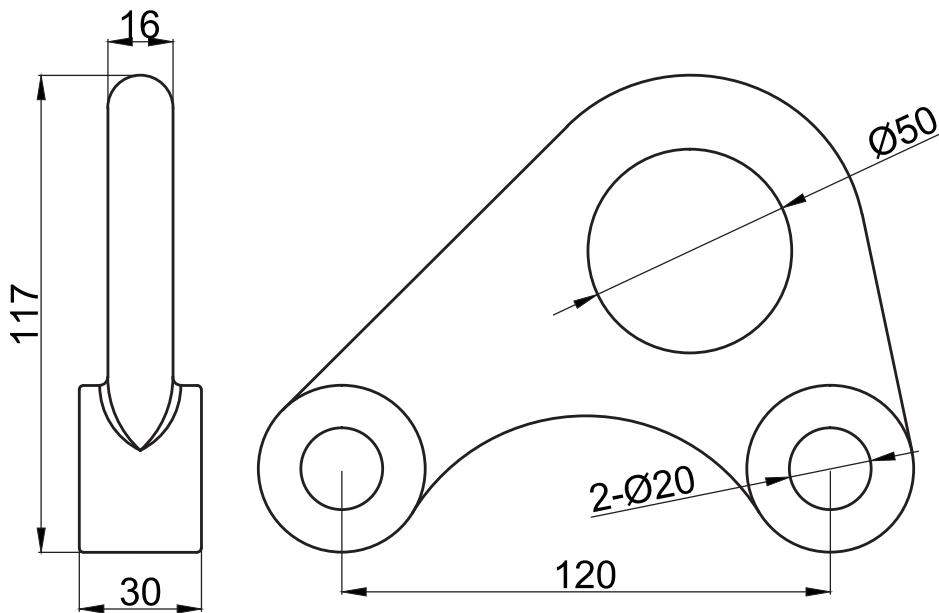


吊钩规格型号 HOOK SPECIFICATION	
HG-D-2T	
B2	33
a1	34
b1	16
b2	16.5
h1	45.5
h2	42
B1	32
d	48

注：单位mm/Note:Unit mm

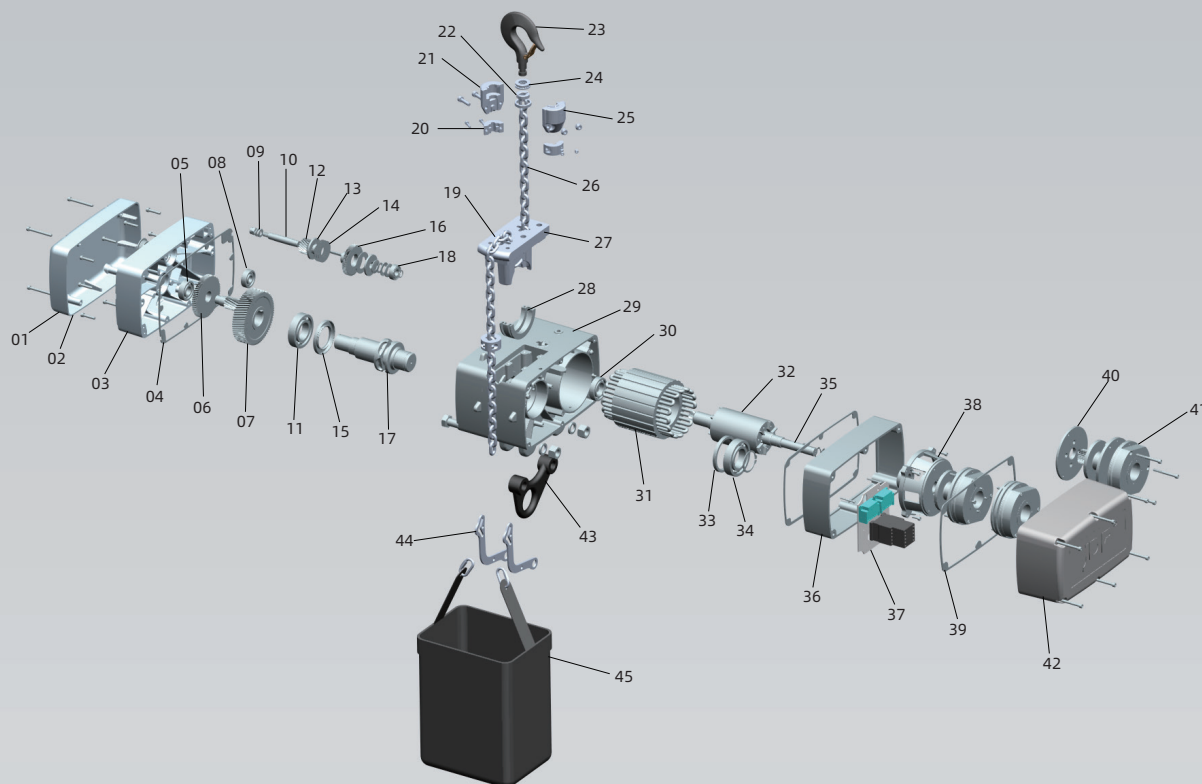
吊环组件  
Lifting ring assembly

图3/Figure 3



注：单位mm/Note:Unit mm

# 产品结构表/PRODUCT STRUCTURE

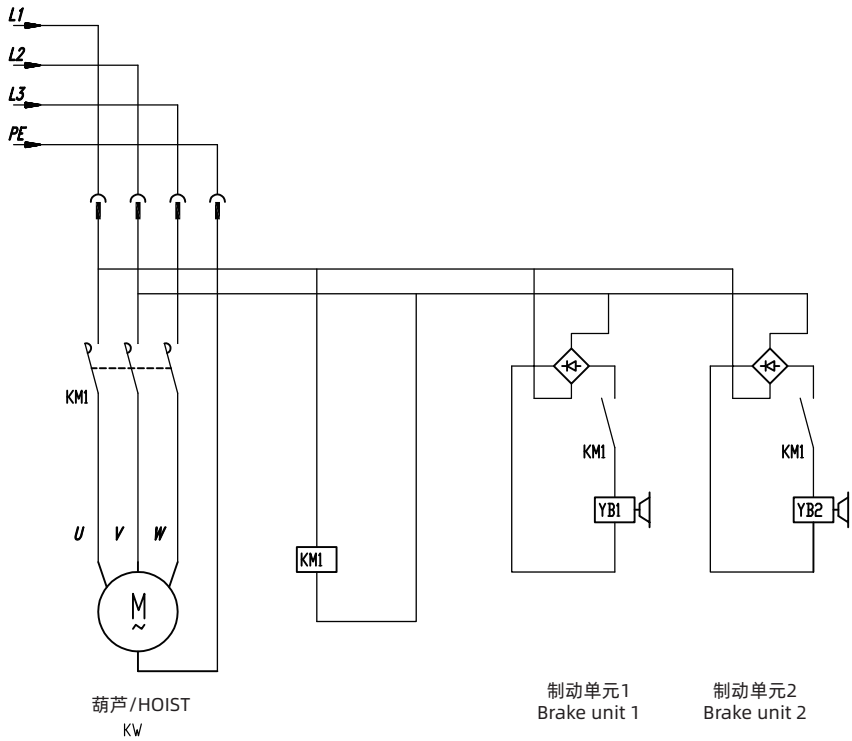


01: 齿轮箱端前盖	02: 齿轮箱前盖密封橡胶垫	03: 齿轮箱盖	04: 齿轮箱端纸垫	05: 6204轴承	06: 慢速组合轮	07: 慢速齿轮大齿
08: 油封	09: 6305轴承	10: 离合轴	11: 6208轴承	12: 离合器齿轮	13: 离合器压片	14: 离合器摩擦片
15: 油封	16: 离合器齿轮	17: 起重链轮	18: 6202轴承	19: 尼龙导链架	20: 限位锁块	21: 下钩夹板
22: 51104压力轴承	23: 下钩	24: 下钩半圆固定圈	25: 下钩胶套	26: 链条	27: 尼龙盖板	28: 半圆护链器
29: 箱体	30: 6006轴承	31: 定子	32: 转子	33: 油封	34: 轴承	35: 6205轴承
36: 加高铝件	37: 电气	38: 刹车网罩	39: 电器端海绵垫	40: 刹车板	41: 电磁刹车*2	42: 电器后盖
43: 吊环	44: 链兜插件	45: 链兜				
01: front cover of gear box	02: rubber seal for gear box front cover	03: Gear box cover	04: paper seal for gear box	05: 6204 bearing	06: low speed combination gear	07: low speed gear big
08: oil sea	09: 6305 Bearing	10: clutch shaft	11: 6208 bearing	12: clutch gear	13: clutch pressing disk	14: friction plate
15: oil seal	16: ntermediate gear of clutch	17: lifting sprocket	18: 6202 bearing	19: nylon chain guide	20: limit block	21: down hook splint
22: 51104 pressure bearing	23: lower hook	24: fixed half ring	25: lower hook rubber bush	26: chain	27: nylon cover	28: chain protection device
29: box	30: 6006 bearing	31: stator	32: rotor	33: oil seal	34: bearing	35: 6205 bearing
36: aluminum connection part	37: Electrical equipment	38: Brake net cover	39: sponge seal for electric end	40: brake disc	41: electro-magnetic brake	42: rear cover for electric end
43: Swivel ring	44: chain bag connection part	45: Chain bag				

电器线路图/ELECTRICAL WIRING DIAGRAM

高压直控-双刹-3ph/High voltage directly control-double brake-3ph

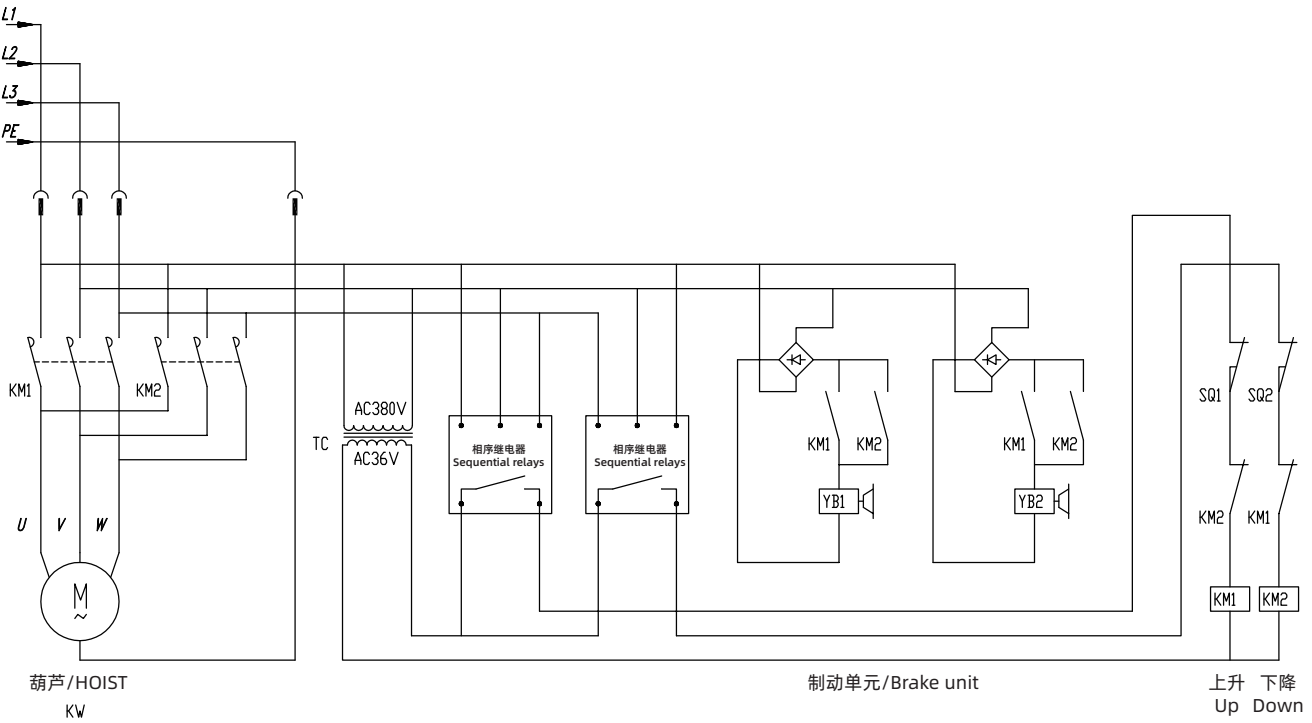
图5/Figure 5



注：不带限位/Note: without limit switch

高压直控-双刹-3ph/High voltage directly control-double brake-3ph

图6/Figure 6



注：带限位/Note: with limit switch